

# AiroPeek™

## Wireless Protocol Analyzer

### Wireless Network Analysis with AiroPeek

The world is going wireless. The prohibitive costs of building wired network infrastructures have paved the way for wireless networking on a global scale. As corporate operations increasingly rely on cost-effective wireless networks for accurate and real-time communication, the ability to analyze and troubleshoot network problems in the wireless environment becomes more and more important for the network manager. Wireless networks require sophisticated and specialized analytical and diagnostic tools in order to maintain, optimize and secure network functions. WildPackets' AiroPeek Protocol Analyzer is specifically designed to meet the challenges of wireless network management.

AiroPeek is a comprehensive packet analyzer for IEEE 802.11b wireless LANs, supporting all higher level network protocols such as TCP/IP, AppleTalk, NetBEUI and IPX. Affordable and easy-to-use, AiroPeek contains all of the network troubleshooting features familiar to users of our award-winning EtherPeek™. In addition, AiroPeek quickly isolates security problems, fully decodes 802.11b WLAN protocols, and expertly analyzes wireless network performance with accurate identification of signal strength, channel and data rates.

### AiroPeek Features

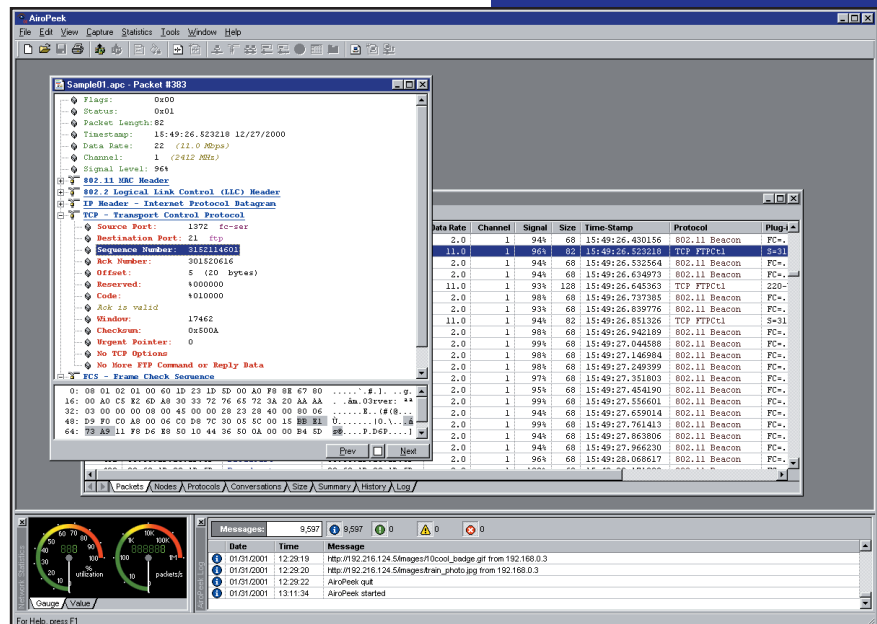
- Channel selection by frequency (channel number), BSSID, or ESSID
- Capture all 802.11b Data and Management frames
- Support for WEP decryption
- Display of data rate, channel, and signal strength for each packet
- Troubleshoot complex WLAN setups including multiple base stations and wireless distribution systems

- Continuous monitoring of network statistics in real-time
- Identify rogue transmitters including Access Points and users
- Full packet decodes (requires WEP keys, where WEP is enabled)
- Statistical analysis for all traffic and for filtered sets of captured packets
- Advanced Name Table (store names in groups, list ports and sockets, node types)
- Alarms, triggers, and notifications, all user definable
- Customized output of statistics (HTML, XML, text)

Decode 802.11b WLAN Protocols

Validate WLAN Encryption

Troubleshoot Higher Level Protocols



### Identifying Potential Security Problems (WEP)

AiroPeek can be set to scan continuously for failed authentication attempts, capturing all the traffic exchanged in these attempts and making it possible to identify the potential attacker. With Advanced Filtering, AiroPeek can be set to watch for WEP (Wired Equivalent Privacy) 128-bit encrypted traffic to or from any MAC address which is NOT a known user of the system.

AiroPeek network analysis tools for 802.11b WLANs:  
Decode packet window



## Analyzing Higher Level Network Protocols

Whether AiroPeek is used in an all-wireless environment or to troubleshoot the wireless stations in an extended service set, WildPackets' ProtoSpecs™ technology decodes and analyzes thousands of commonly used network protocols. Using the same set of WEP keys as any other station on the network, AiroPeek can analyze all levels of network communications. AiroPeek seamlessly carries familiar network traffic analysis tools from the wired into the wireless environment. With AiroPeek, you can quickly see whether problems originate at the sending node or at the access point and understand at a detailed level exactly where the problem lies.

## Configuration and Traffic Management

AiroPeek notes signal strength, transmission rate, channel and fragmentation for each packet. Set to scan a particular channel or base station, AiroPeek can monitor conditions at the boundary between cells in networks with multiple access points. Such a survey may find dead spots in a particular configuration or identify places where interference seems to be unusually high. Solving the problem may require changing the channel of one or more access points, or perhaps moving one or more to a new location. The effects of each change can quickly be monitored with AiroPeek.

## Roaming and Wireless Analysis

AiroPeek can diagnose and troubleshoot problems in a wide variety of network environments. Many WLAN vendors, for example, use proprietary methods to facilitate roaming between cells. AiroPeek can be taught to recognize and decode new packet types. It can also capture and filter packets based on user-defined values or character strings found at specific locations within packets. Both of these capabilities help AiroPeek adapt to the widest possible range of user requirements.



Copyright © 2001 WildPackets. All Rights Reserved. AiroPeek, EtherPeek, ProtoSpecs and NAX are trademarks of WildPackets. All other product names and trademarks are the property of their respective companies.

## System Requirements

AiroPeek runs under Windows 95 version B, 98, NT, 2000 and ME. AiroPeek v1.0 requires the installation of WildPackets' custom NDIS driver for the Cisco 340 series 11Mbps DSSS PC or PCI Card. This driver ships with AiroPeek.

## Ordering Information

WildPackets products are available from our W.I.N. Channel Partners, domestic and international distributors, directly from sales@wildpackets.com or from the electronic purchase area at [www.wildpackets.com](http://www.wildpackets.com).

## WildPackets Academy

Through the creation of a structured educational curriculum, WildPackets Academy meets the professional development and protocol analysis training requirements of corporate, educational, government, and private network managers and support staff. All course offerings are available in public venues and as on-site programs that can be tailored to meet specific customer requirements.

WildPackets Academy offers:

- A structured educational curriculum including 802.11b WLAN analysis
- Hands-on lab exercises focusing on real-world methods and problems
- Expert, professional instructors with years of practical field experience and knowledge
- Public courses nationwide
- On-site delivery with special focus and customization options scheduled at your location
- Expert instructional design for custom courseware development
- Integration of third-party hardware and software products into custom courseware
- Professional certification through the Network Analysis Expert (NAX) examination program

## About WildPackets, Inc.

WildPackets develops and markets high-performance tools that deliver real-time, strategic information about an organization's network and Internet presence. Our award-winning products include:

|                           |   |
|---------------------------|---|
| <b>AiroPeek:</b>          | Wireless protocol analyzer                                  |
| <b>EtherPeek:</b>         | Ethernet analyzer   |
| <b>EtherHelp:</b>         | FREE, distributed remote capture application                |
| <b>TokenPeek:</b>         | Token ring analyzer   |
| <b>TokenHelp:</b>         | FREE, distributed remote capture application                |
| <b>WatchPoint:</b>        | Real-time web monitoring                                    |
| <b>WebStats:</b>          | Intelligent website management tool for EtherPeek           |
| <b>iNetTools:</b>         | IP test utility suite                                       |
| <b>NetSense:</b>          | Expert packet trace analyzer                                |
| <b>ProConvert:</b>        | Packet file converter                                       |
| <b>NetDoppler:</b>        | Remote host route discovery, latency and throughput utility |
| <b>PacketScrubber:</b>    | removes confidential data from packet traces                |
| <b>NetworkCalculator:</b> | IP address computing utility suite                          |

*AiroPeek is specifically designed to meet the challenges of network management in the wireless environment.*

**WildPackets**

2540 Camino Diablo  
Walnut Creek, CA 94596  
(925)937-7900  
fax (925)937-2479

[www.wildpackets.com](http://www.wildpackets.com)

